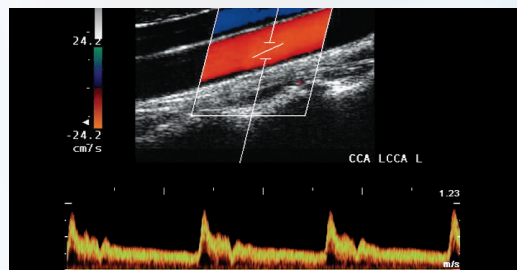




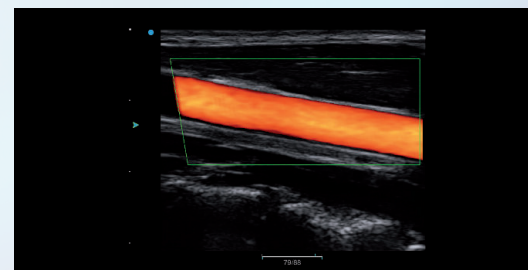
Sonido ***Four***

Highest performance in a laptop format



The perfect synthesis

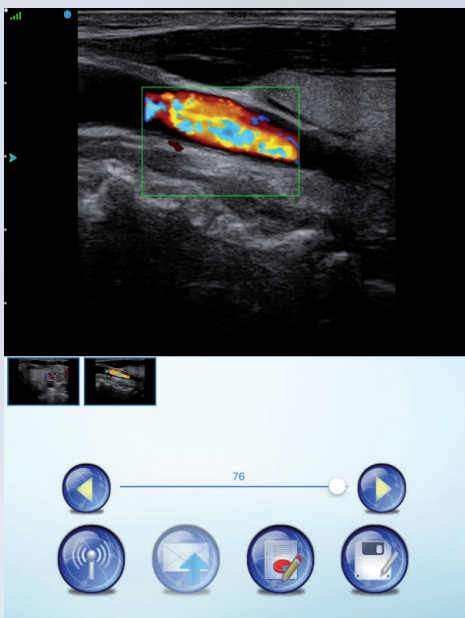
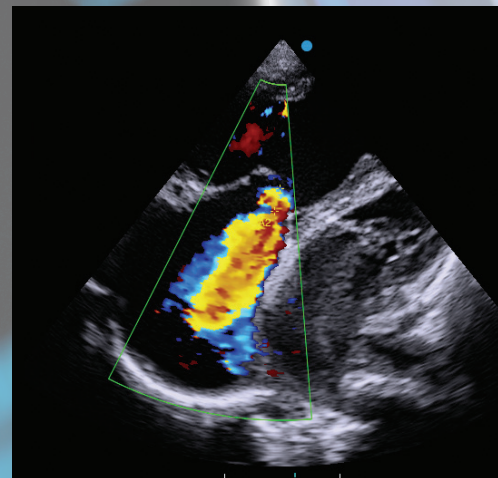
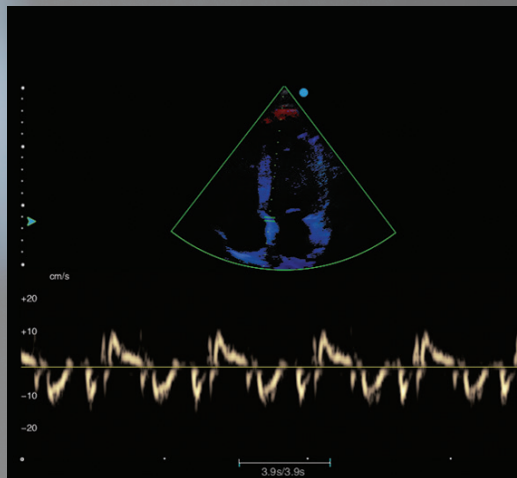
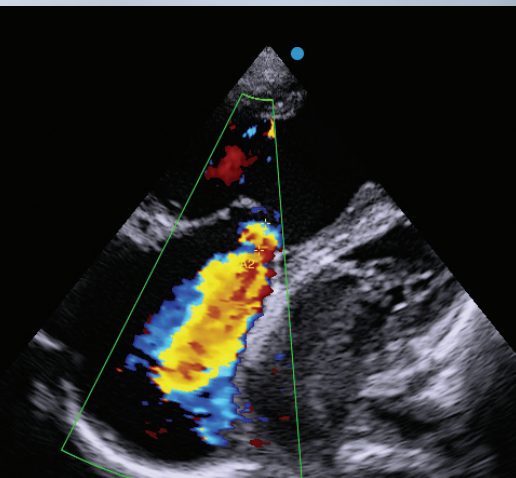
Sonido *Four* supports your diagnosis with unique image quality, optimised workflow, as well as reliable and intuitive operation. The integrated high-end modules, such as Fusion-THI and NanoView, enable the best image quality for the highest diagnostic reliability.



Superior ease of use for fast and safe examinations

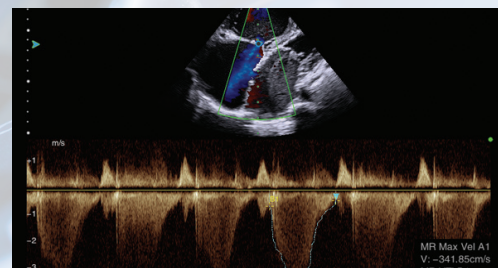
The user-oriented system concept with height-adjustable system carriage and background-illuminated transparent panel allows for fast and safe navigation using a single function key. This ensures maximum comfort during the examination.

Sonido *Four*



Integrated streaming technology for maximum flexibility

The modern, network-compatible operating system allows you to store examination results in real time, as well as to edit and export images and sequences in different formats (JPG, BMP, etc.). With Sono Air, you can stream examinations in real-time onto your iPhone or iPad and you can store them there as well.



Mobility - for the highest requirements

Sonido *Four* is a highly integrated, portable colour Doppler ultrasound system from Zimmer MedizinSysteme, which can be expanded up to the Cardio system. Additionally, even Panoscope view and elastography are possible.

Concepts for the Future



Patients set great store by future technologies.

Sonido *Four* generates trust.



Technical specifications

Display modes	B / 2B / 4B image, B / M image, AM-image zoom B image
Image processing	Tissue Harmonic Imaging (THI) Macro-Fidelity (MFI) NanoView
Special features	Automatic optimization for B and Doppler models
Monitor	Integrated 15" HR TFT LCD monitor
Panel	illuminated, alphanumeric
Digital media	Internal memory or USB memory image
Connections	1 probe connector up to 4 additional ports via optional probe replicator LAN RJ45, 2x USB, ECG input, footswitch, WLAN via <i>optional cable</i> : RGB (TV standard) S-VHS and composite video
Power supply	220-240 V, 50/60 Hz
Dimensions W / D / H	35 cm / 32 cm / 7 cm
Weight	about 6 kg with battery
Option / upgrade	Cardio Panoscope Elastography Tissue Doppler imaging (TDI) Vector Space Flow (VS Flow) Dicom 3.0 SonoAir

Zimmer MedizinSysteme GmbH
Junkersstraße 9
89231 Neu-Ulm, Germany
Tel. +49 7 31. 97 61-291
Fax +49 7 31. 97 61-299
export@zimmer.de
www.zimmer.de

