

re|Model

# body toning

feel the difference

re|Model

A photograph of a woman in white underwear sitting on a light-colored floor. She is in a seated, slightly crouched position, with her legs tucked under her. The image is overlaid with a semi-transparent orange banner that contains white text. The background is a plain, light-colored wall and floor.

Body toning and skin tightening through  
Radiofrequency combined with Vacuum  
and Low Level Laser Technology

## Comfortable, Effective, Non-Invasive

The new generation in body contouring & skin tightening treatments. reModel offers multiple treatment applications equipped with industry's most coveted aesthetic technologies & desired aesthetic treatments.

From simple improvements in problem areas to major full-body transformation, we can help you look your very best.



### The concept is combining effective treatments and remodel your body

The reModel device combines radiofrequency, vacuum and low-level laser to improve problem areas or even for a full body transformation.

#### **VACUUM**

Blood Circulation & Lymphatic Drainage

#### **RF**

Skin Rejuvenation & Cellulite Improvement

#### **LOW LEVEL LASER**

Fat layer Reduction

1

2

3

Combine  
3 Technologies

Multi-functional with



re | Model







## Increased efficiency

### Maximum flexibility

- Combines 3 technologies:  
Radiofrequency, Low-Level Laser and Vacuum



## Maintenance-friendly

### Time for the essentials

- Removable applicators make replacement easy



## Ergonomic, stylish, high-performance

### Designed for modern practice

- Large display with intuitive software interface
- Individual protocols adapted to the muscle region
- Individual settings for each treatment area

# Application regions

one treatment - multiple effects



Face



Arms



Tights



Décollete



Back / Abdomen



Calves



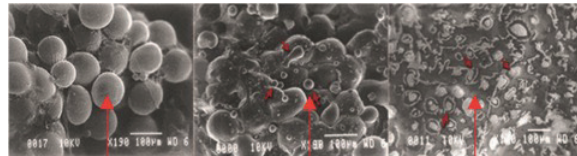
# Technologies with three therapies

## Combine successfully

The applicators with integrated low-level laser of the device reModel have a wavelength of 660 nm. As the laser radiates into the fat tissue, photo excitation of cytochrome-c-oxidase within hypertrophic adipocyte causes  $Ca^{2+}$  &  $H^{+}$ . That helps to create transitory pore within the adipocyte & accelerate to separate triglycerides into pieces. Broken lipid easily releases into the interstitial space and is processed by the body's natural physiological and metabolic pathways.

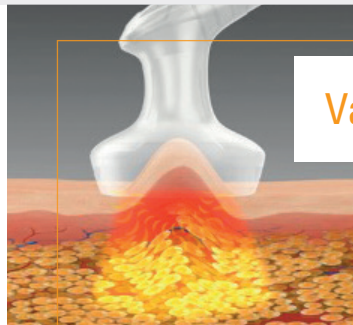
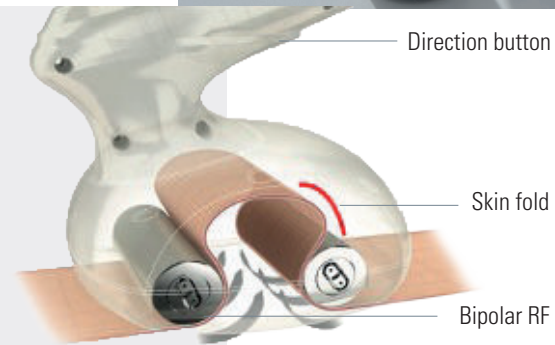
It is effective in reducing overall body circumference measurements of specifically treated regions, and also has shown to reduce edemas.

### 660nm Low Level Laser, Fat layer Reduction



### Roll, Skin Rejuvenation & Cellulite Improvement

- Body Contouring & Cellulite Improvement
- Bipolar vacuum-assisted motorized roll handpiece enables both Laser & RF energy precisely targeted where it can have maximum effect
- Easy to operate
- 4 kinds of dynamic pulses

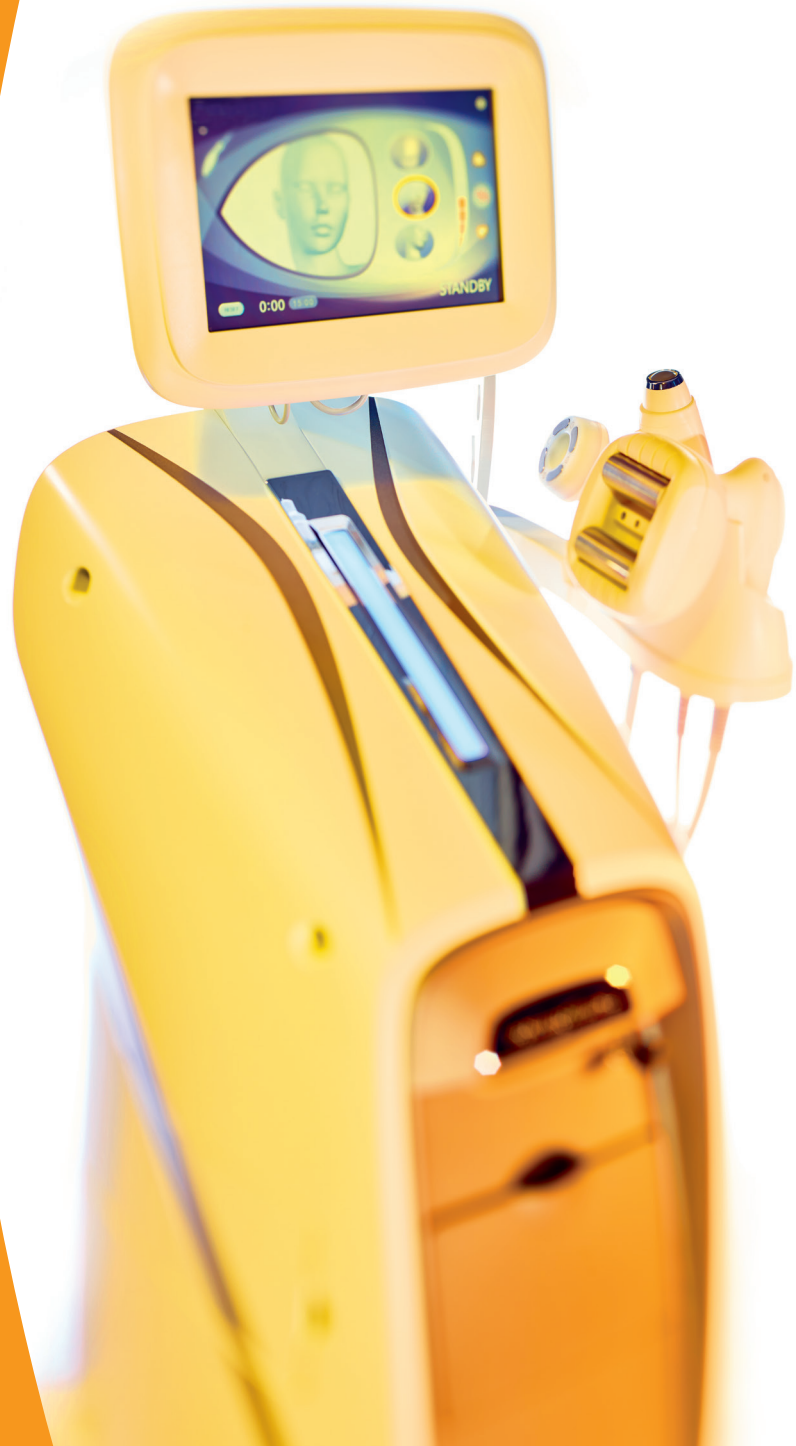


### Vacuum, Blood Circulation & Lymphatic Drainage

The High Energy Inductive Treatment with reModel is performed using electromagnetic pulses and is able to contract the muscles.

Electromagnetic fields can penetrate cells, tissues, organs and bones without deformation or loss, activate the electrochemistry of tissues and improve the function of cells and cell membranes. The magnetic field consequently stimulates nerve cells, muscles and blood vessels.





# Technical data

**123**<sup>H</sup>  
**41**<sup>W</sup>  
**52**<sup>L</sup>

Housing  
Dimensions (cm)

Radiofrequency,  
Low-Level Laser, Vacuum  
Technology

**10.2 inch Full color Touch Screen**

Control Panel

**230 V**~

Power

**50** Hz  
Frequency

**MD**

**60** kg  
Weight



Follow us

Visit our homepage [www.zimmer-aesthetics.com](http://www.zimmer-aesthetics.com)



Zimmer MedizinSysteme GmbH  
Junkersstraße 9  
89231 Neu-Ulm, Germany  
Tel. +49 7 31. 97 61-291  
Fax +49 7 31. 97 61-299  
export@zimmer.de  
www.zimmer-aesthetics.de

